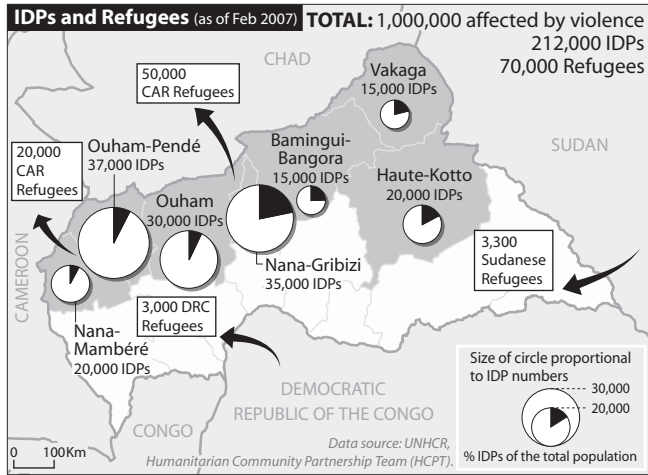
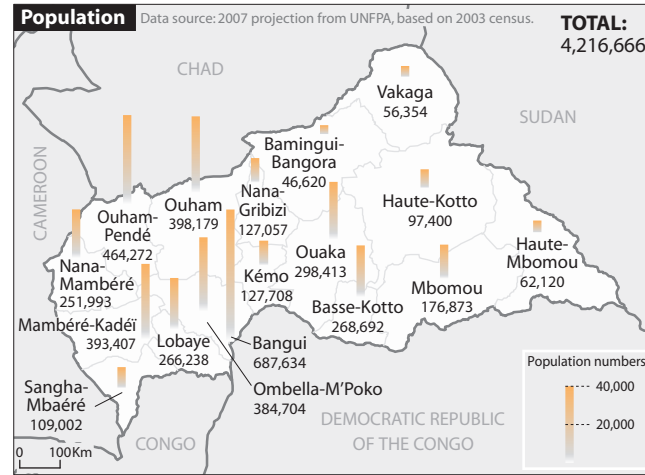


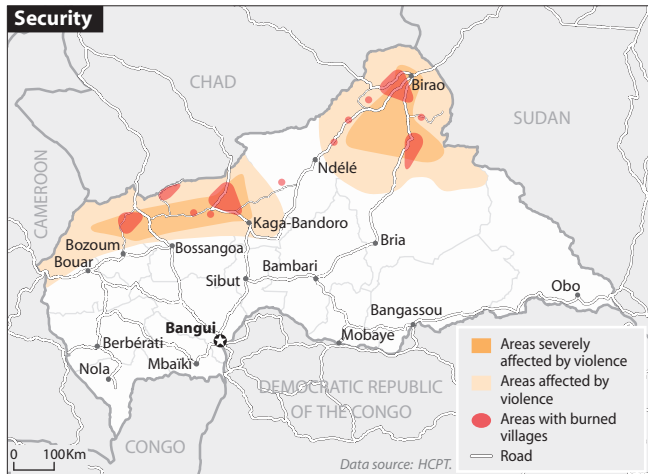
CENTRAL AFRICAN REPUBLIC : Humanitarian Profile - 2006/2007



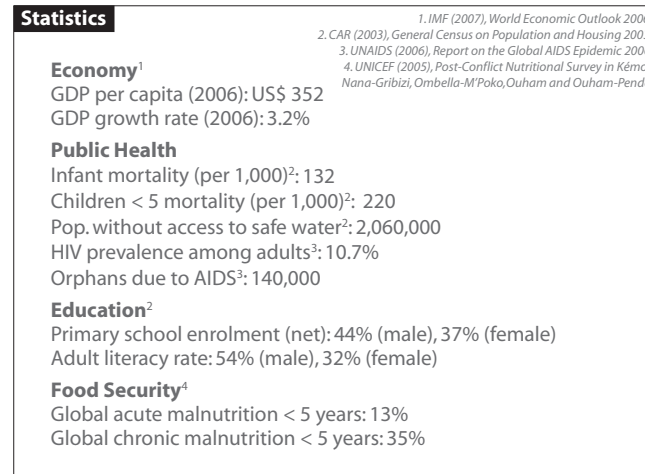
- Estimated 282,000 forced to flee their homes due to insecurity, notably in country's northern regions.
- IDPs have fled to wilderness near their villages.
- Providing protection to civilians affected by violence is an urgent priority.
- IDP access to food and clean water is limited and likely to deteriorate in near future.



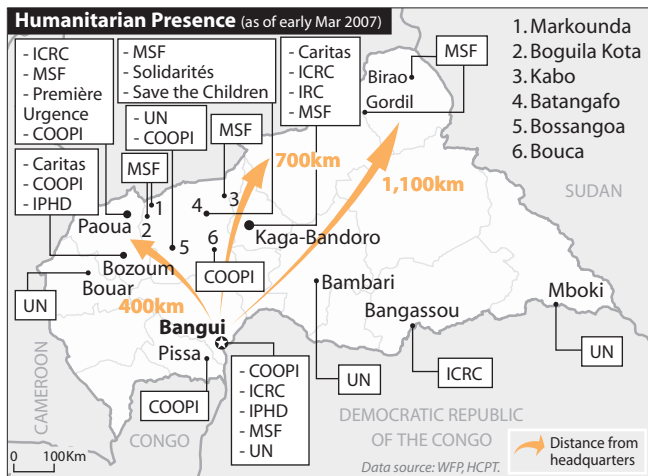
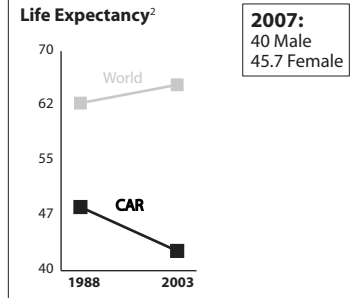
- Over 50% is sparsely inhabited.
- Over 30% of population concentrated in Bangui and north-west.
- Population density of north-east is among lowest on continent (one per square km).
- Insecurity since late 2005 has added to already high levels of migration due to economic factors.



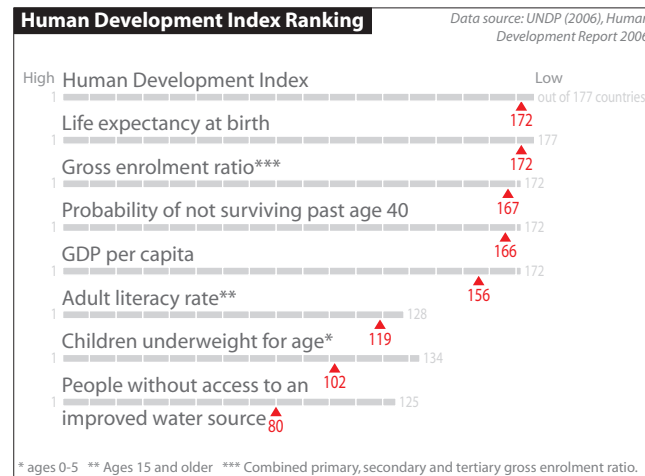
- Security environment has deteriorated steadily in 2006, especially in north-east and north-west.
- Security threats include armed insurgents in north, highway banditry throughout the country and urban crimes in Bangui.
- Spread of light weapons, ranging from domestic hunting rifles to light-calibre military weapons.
- Civilians caught in recurrent rounds of violence. At least 100 villages burnt in the last months.



- Average life expectancy dropped from 48.7 years in 1988 to 42.7 in 2003.
- Life expectancy decreases 4.8 months per year.
- Almost one child in five does not reach age of five.



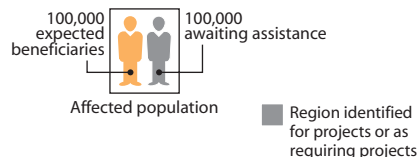
- Vast distances from agency HQs complicate provision of humanitarian support, coordination, data collection and sharing or development projects.
- Few international and local NGOs work in north and region is off limits to most UN staff.
- Limited UN access to 60% of the country.



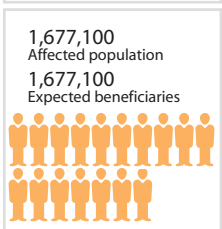
- World's seventh least developed country.
- 73% live on less than US\$1 per day (66% in 1995).
- External debt amounts to around 80% of GDP.

CAP-identified Needs and Response by Sector

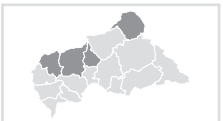
The information in this diagram is based on project areas planned in the 2007 Consolidated Appeals Process (CAP). The numbers below refer to affected population and expected beneficiaries in CAP project areas by sector.



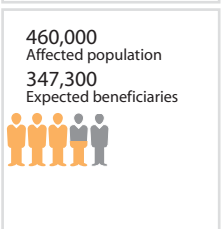
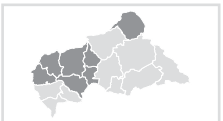
ECONOMIC RECOVERY AND INFRASTRUCTURE



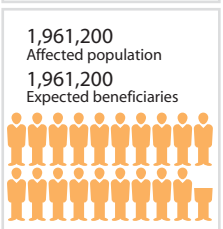
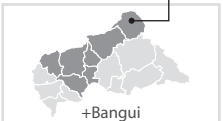
EDUCATION



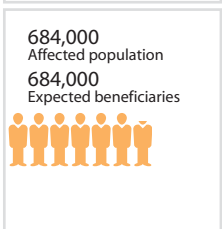
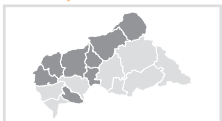
FOOD SECURITY



HEALTH



PROTECTION, HUMAN RIGHTS, RULE OF LAW



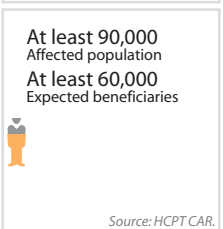
MULTI-SECTOR ASSISTANCE TO REFUGEES



SHELTER AND NON-FOOD ITEMS



WATER AND SANITATION

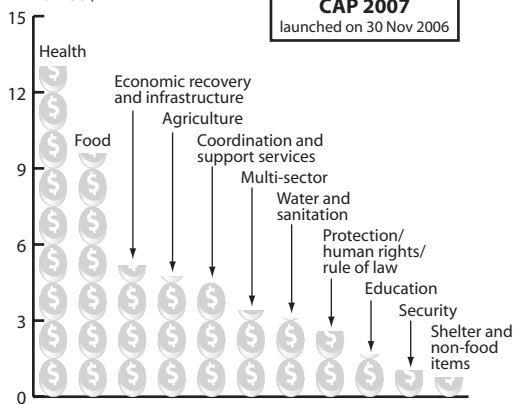


Source: HCPT CAR.

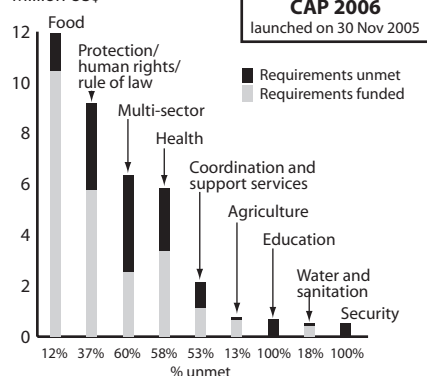
Consolidated Appeal

These charts show funding requirements through the CAP in 2007 and 2006.

Original Requirements
Million US\$



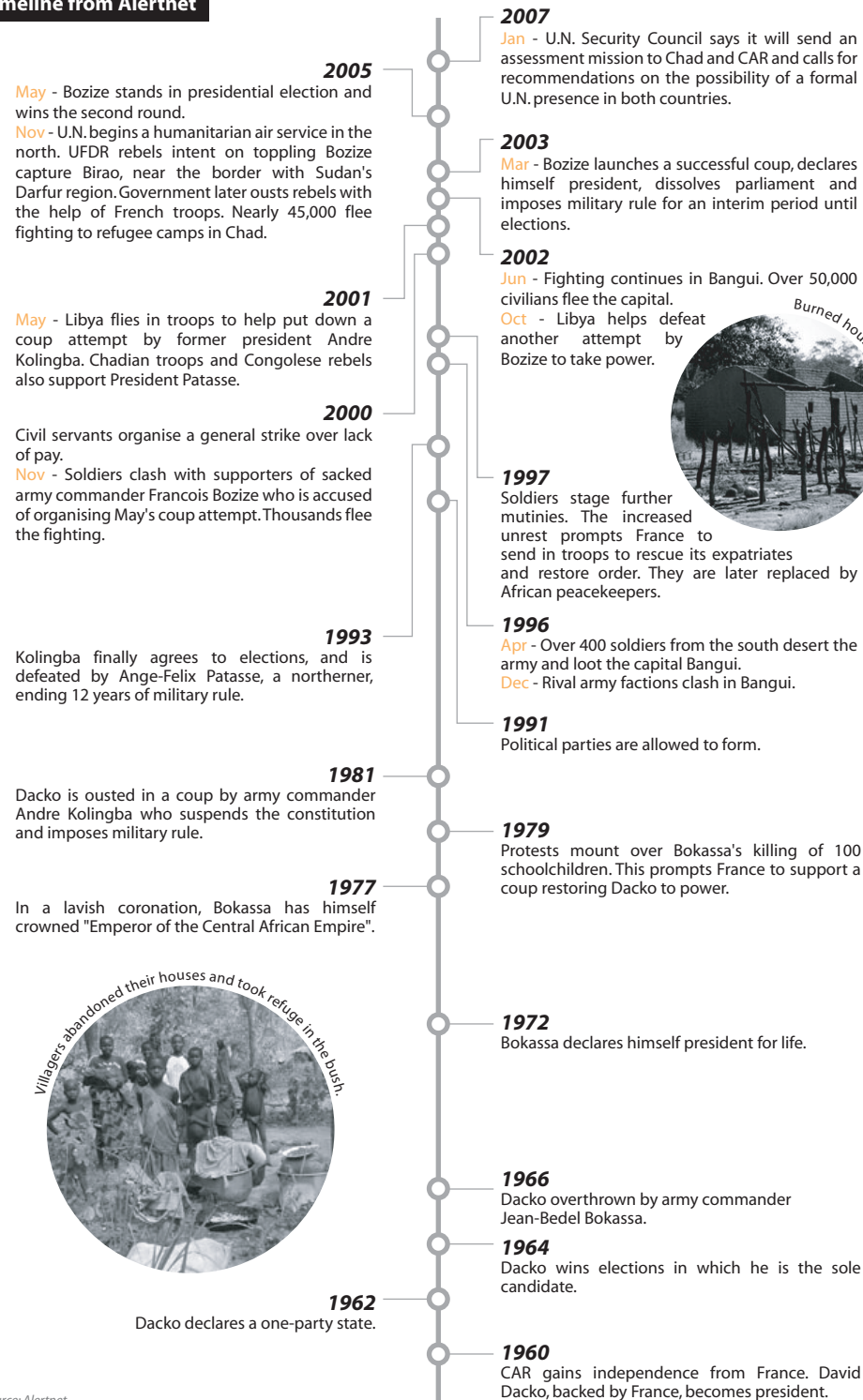
Revised Requirements
Million US\$



Source: Consolidated Appeal from the Financial Tracking Service.

The data and information represented originates from public sources as indicated. ReliefWeb makes every effort to ensure that its products are accurate, complete and timely, but no warranties are made to this effect. Comments are welcome to submit@reliefweb.int.

Timeline from Alertnet



Source: Alertnet.
Pictures: OCHA CAR.