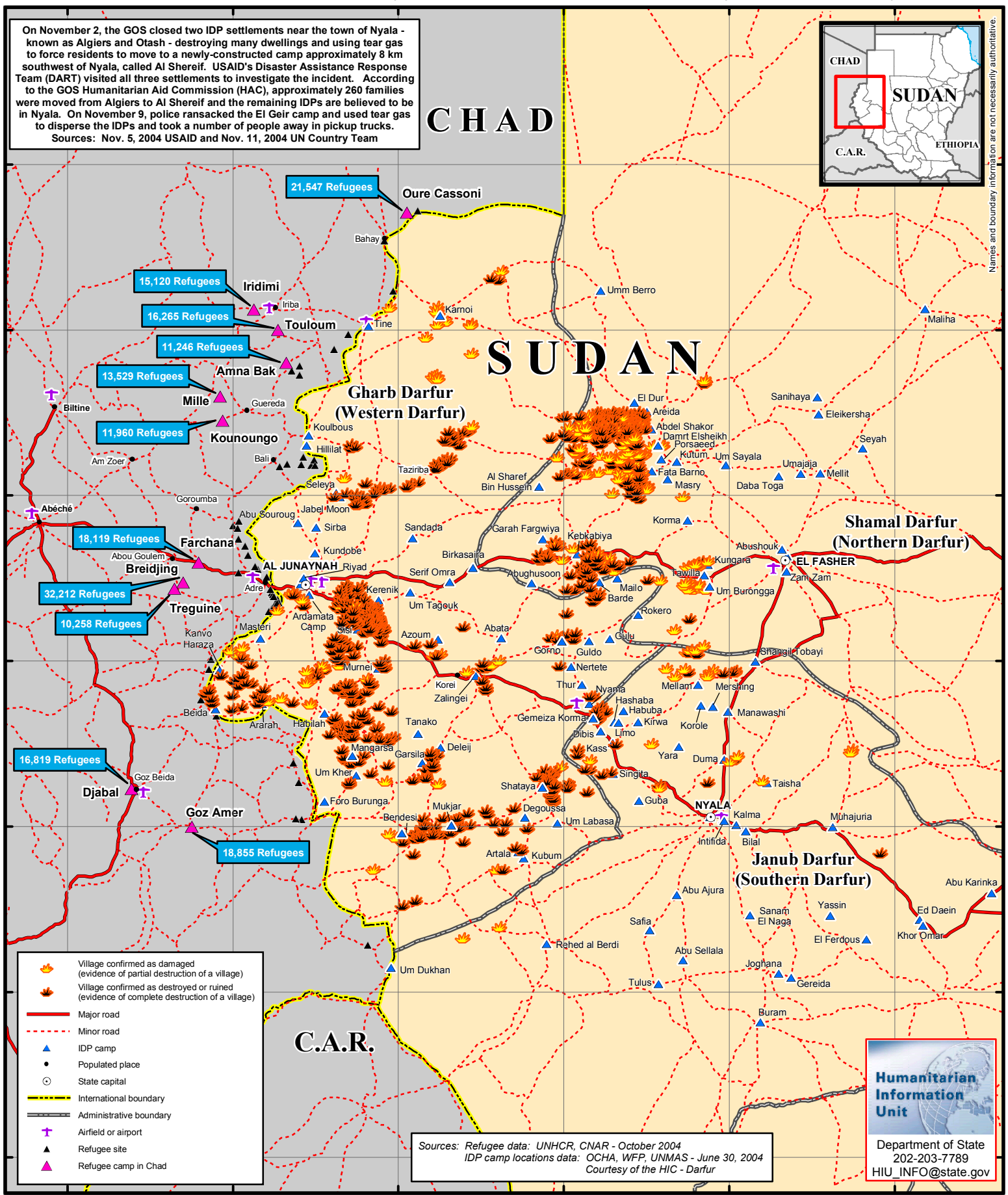


Sudan (Darfur) - Chad Border Region Confirmed Damaged and Destroyed Villages

Villages in Darfur confirmed as destroyed or ruined: 629
Villages in Darfur confirmed as damaged: 188

On November 2, the GOS closed two IDP settlements near the town of Nyala - known as Algiers and Otash - destroying many dwellings and using tear gas to force residents to move to a newly-constructed camp approximately 8 km southwest of Nyala, called Al Shereif. USAID's Disaster Assistance Response Team (DART) visited all three settlements to investigate the incident. According to the GOS Humanitarian Aid Commission (HAC), approximately 260 families were moved from Algiers to Al Shereif and the remaining IDPs are believed to be in Nyala. On November 9, police ransacked the El Geir camp and used tear gas to disperse the IDPs and took a number of people away in pickup trucks.
Sources: Nov. 5, 2004 USAID and Nov. 11, 2004 UN Country Team



Sources: Refugee data: UNHCR, CNAR - October 2004
IDP camp locations data: OCHA, WFP, UNMAS - June 30, 2004
Courtesy of the HIC - Darfur

Humanitarian Information Unit
Department of State
202-203-7789
HIU_INFO@state.gov