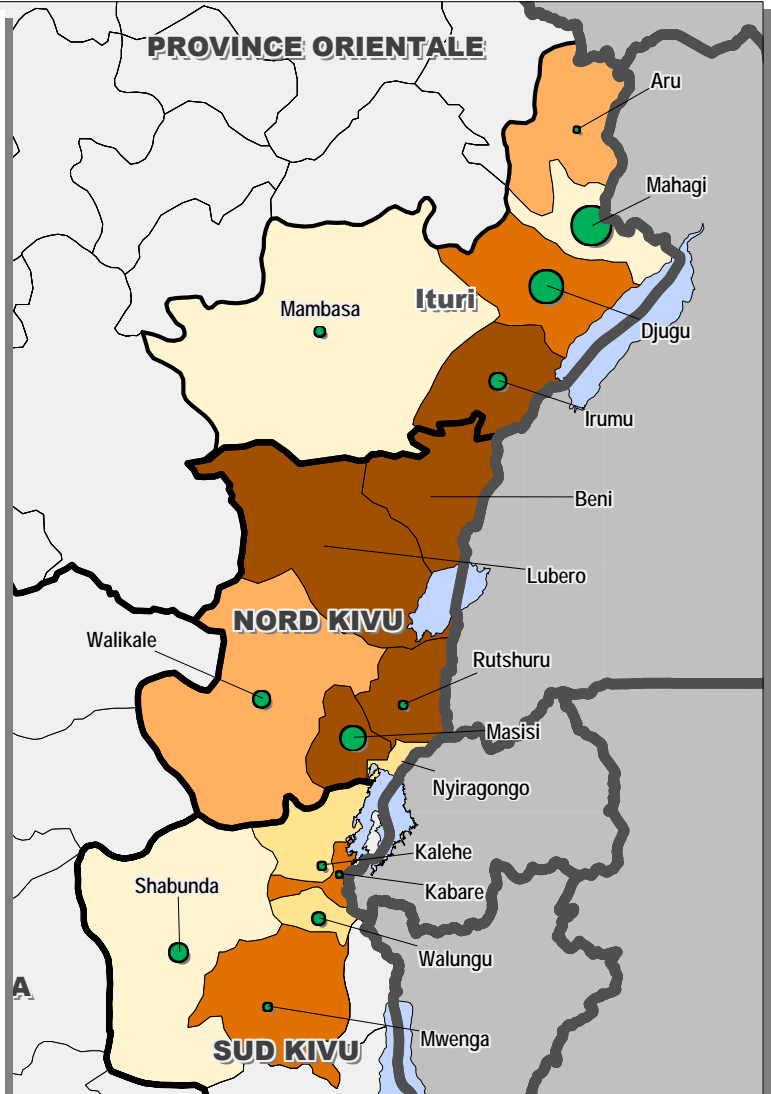


# IDPs AND RETURNEES IN THE EASTERN PROVINCES AS OF MARCH 2007

ITURI DISTRICT (as of 03/07)	IDPs	RETURNEES
Mahagi	10 520	157 122
Djugu	46 331	113 654
Mambasa	6 954	12 392
Irumu	115 555	32 383
Aru	28 353	4 460
<b>TOTAL ITURI</b>	<b>207 713</b>	<b>320 011</b>
NORD KIVU (as of 01/07)	IDPs	RETURNEES
Beni	112 334	0
Walikale	28 965	30 500
Lubero	224 608	0
Nyiragongo	14 367	0
Masisi	109 572	67 150
Rutshuru	61 821	6 285
<b>TOTAL NORD KIVU</b>	<b>551 667</b>	<b>103 935</b>
SUD KIVU (as of 01/07)	IDPs	RETURNEES
Shabunda	11 035	36 850
Mwenga	53 780	8 645
Walungu	24 415	15 885
Kabare	47 495	700
Kalehe	26 890	6 455
<b>TOTAL SUD KIVU</b>	<b>163 615</b>	<b>68 535</b>
KATANGA (as of 10/06)	IDPs	RETURNEES
Mitwaba	2 885	49 199
Kalemie	5 045	0
Manono	19 480	4 870
Malemba Nkulu	29 166	26 600
Bukama	0	65 000
Pweto	26 575	86 370
Moba	1 100	0
<b>TOTAL KATANGA</b>	<b>84 251</b>	<b>232 039</b>
<b>OVERALL TOTAL</b>	<b>1 007 246</b>	<b>724 520</b>



**IDPs**

- > 100 000
- 50 000 to 100 000
- 30 000 to 50 000
- 15 000 to 30 000
- < 15 000

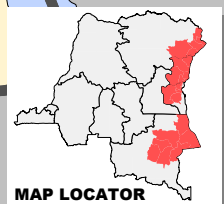
**RETURNEES**

- 160 000
- 80 000
- 16 000

The boundaries and names and the designations used on this map do not imply official endorsement or acceptance by the United Nations

Geographical Data Source: GIS Working Group  
Thematic Data Source: OCHA DRC

Production Date: 09.04.2007  
Produced by: OCHA DRC - HIS  
Datum: WGS84



OCHA DRC IS SUPPORTED BY:  
Belgian Cooperation, Canada, Dutch Government, ECHO, France, Germany, Norway, SIDA, Spanish Cooperation, Switzerland, UK Government, USAID/OFDA