

DAMAGE ASSESSMENT FOR IDP CAMP KASASA, KIWANJA TOWN, NORTH KIVU PROVINCE, DRC

Damage Assessment with WorldView-1 & QuickBird Satellite Imagery Recorded 4 November 2008 & 18 October 2008

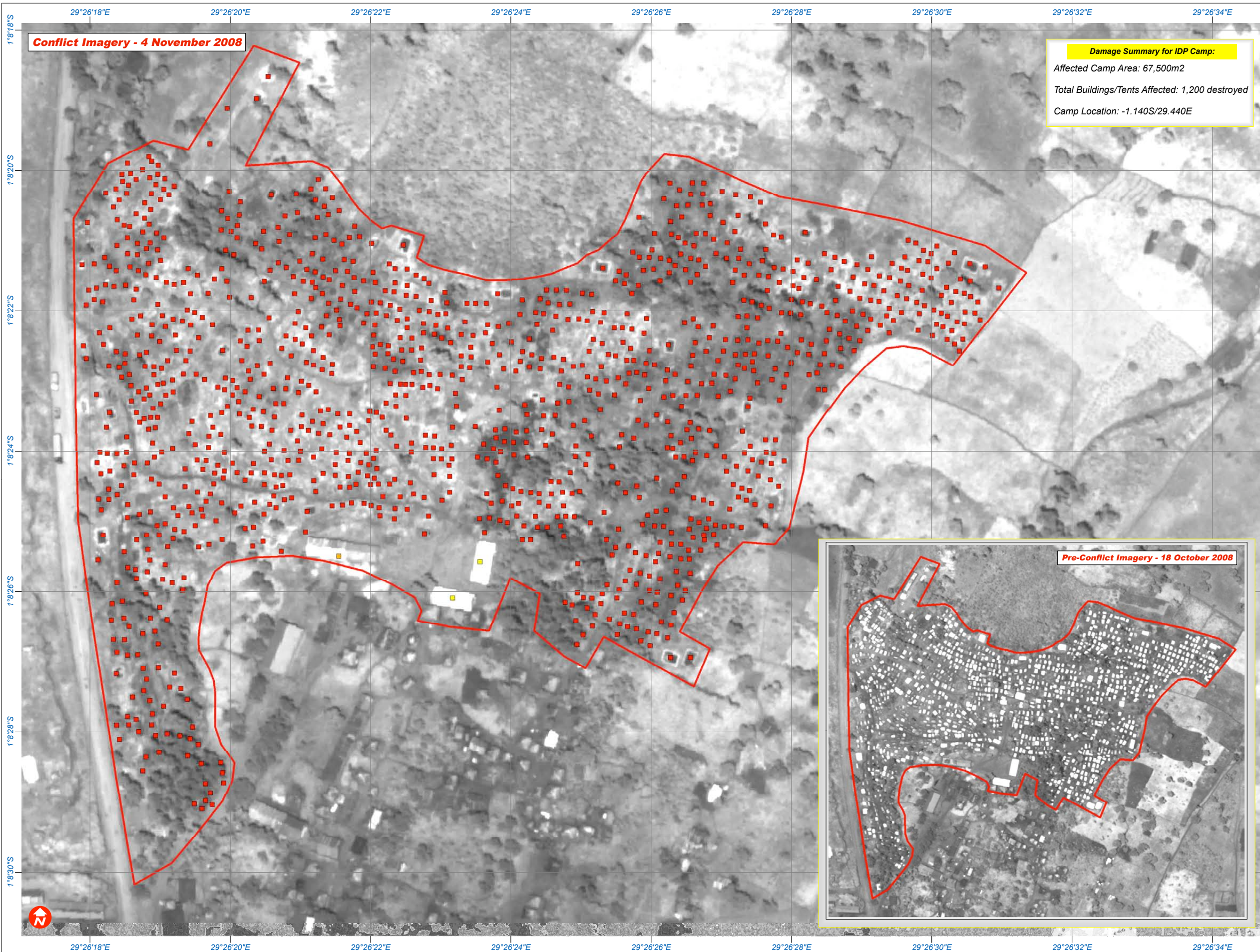
This map presents a satellite-based damage assessment for the affected IDP Camp of Kasasa, northern section of Kiwanja Town, North Kivu Province, DRC. Damaged buildings have been identified with WorldView-1 satellite imagery acquired on 4 November 2008 at a spatial resolution of 50cm. Pre-conflict Quickbird imagery from 18 October 2008 provided by AAAS was also used. Estimates of destroyed / severely damaged IDP camp buildings and tent structures are provided in a map table. This is an initial damage assessment & has not yet been validated in the field.

Security Event 15 November 2008

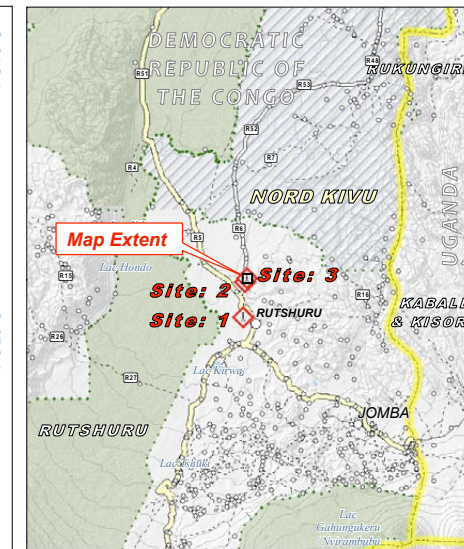


Version 1.0

UNOSAT-2008-000211-DRC



Damage Summary for IDP Camp:
 Affected Camp Area: 67,500m²
 Total Buildings/Tents Affected: 1,200 destroyed
 Camp Location: -1.140S/29.440E



Legend

SATELLITE DAMAGE ASSESSMENT

- Red square: Building: Likely Destroyed
- Yellow square: Building: Likely Severely Damaged
- White square: Building: No Visible Damage
- Red line: IDP Camp Site Boundary

SATELLITE IMAGE REFERENCE

- Top-left: IDP Camp Site
- Top-right: Damaged IDP Camp Site
- Bottom-left: Cultivated Fields
- Bottom-right: Urban Area

Map Scale for A3: 1:1,600

0 5 10 20 30 40 50 60 70 80 Meters

Satellite Data WorldView-1
 Resolution 50 cm
 Imagery Dates 4 November 2008
 Source Eurimage/Digital Globe (2008)
 Additional Imagery QuickBird 18 October 2008
 Source AAAS
 Copywrite Digital Globe (2008)
 GIS Data Keyobs, UNHCR, OCHA, MONUC
 Damage Analysis UNOSAT
 Map Production UNOSAT
 Projection UTM Zone 35 South
 Datum WGS 1984

The depiction and use of boundaries, geographic names and related data shown here are not warranted to be error-free nor do they imply official endorsement or acceptance by the United Nations. This map was produced by the United Nations Institute for Training and Research (UNITAR) Operational Satellite Applications Program (UNOSAT). UNOSAT provides satellite imagery & related geographic information to UN humanitarian & development agencies & their implementing partners.

UNOSAT
 satellite solutions for all
 Contact Information: info@unosat.org
 24/7 Hotline: +41 76 487 4998
www.unosat.org