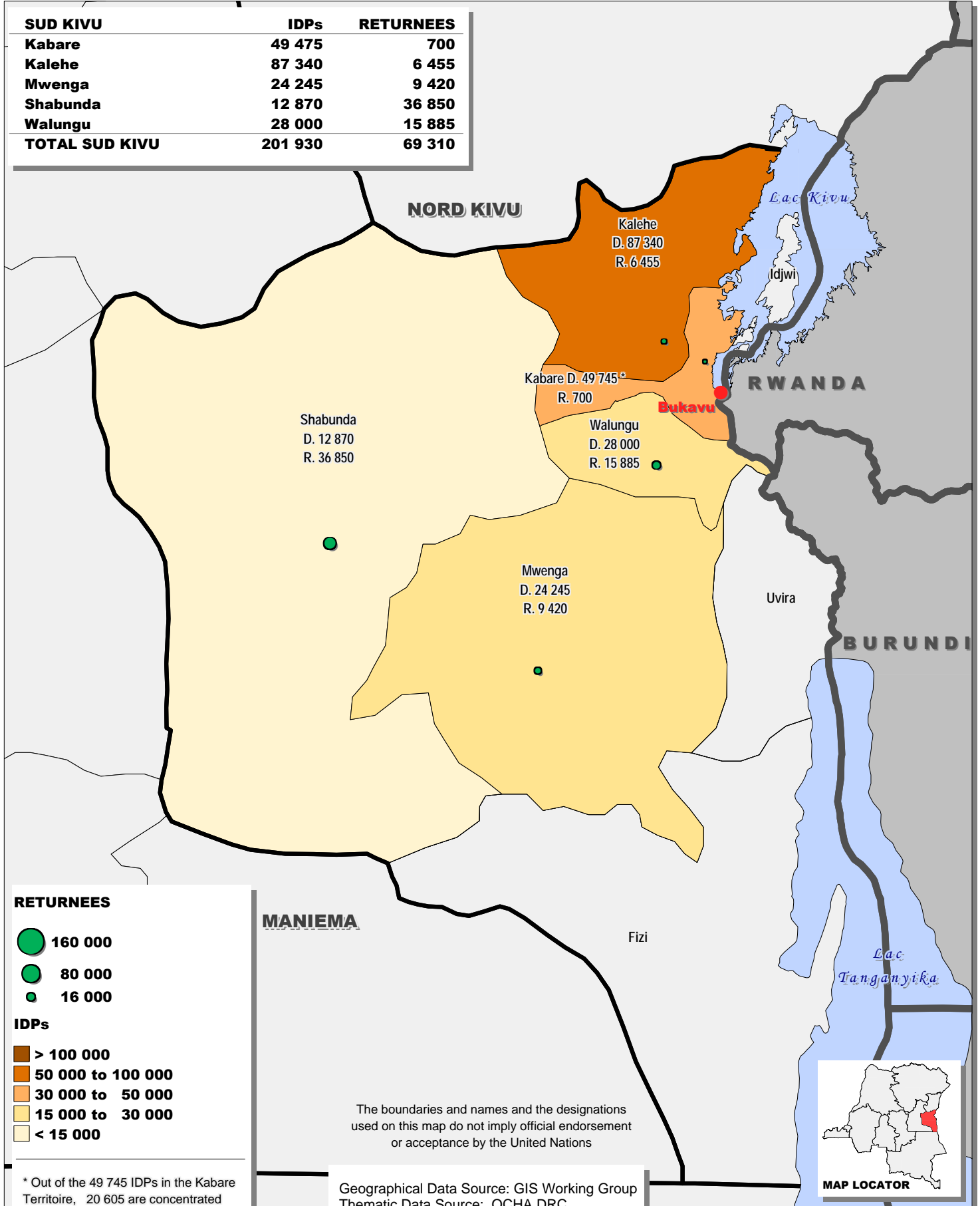


# IDPs AND RETURNEES IN THE SUD KIVU PROVINCES AS OF MARCH 2007

SUD KIVU	IDPs	RETURNEES
<b>Kabare</b>	<b>49 475</b>	<b>700</b>
<b>Kalehe</b>	<b>87 340</b>	<b>6 455</b>
<b>Mwenga</b>	<b>24 245</b>	<b>9 420</b>
<b>Shabunda</b>	<b>12 870</b>	<b>36 850</b>
<b>Walungu</b>	<b>28 000</b>	<b>15 885</b>
<b>TOTAL SUD KIVU</b>	<b>201 930</b>	<b>69 310</b>



The boundaries and names and the designations used on this map do not imply official endorsement or acceptance by the United Nations

Geographical Data Source: GIS Working Group  
Thematic Data Source: OCHA DRC

Production Date: 19.04.2007  
Produced by: OCHA DRC - HIS  
Datum: WGS84

\* Out of the 49 745 IDPs in the Kabare Territoire, 20 605 are concentrated in the city of Bukavu

D. = Displaced persons  
R. = Returnees



MAP LOCATOR

OCHA DRC IS SUPPORTED BY:

Belgian Cooperation, Canada, Dutch Government, ECHO, France, Germany, Norway, SIDA, Spanish Cooperation, Switzerland, UK Government, USAID/OFDA