

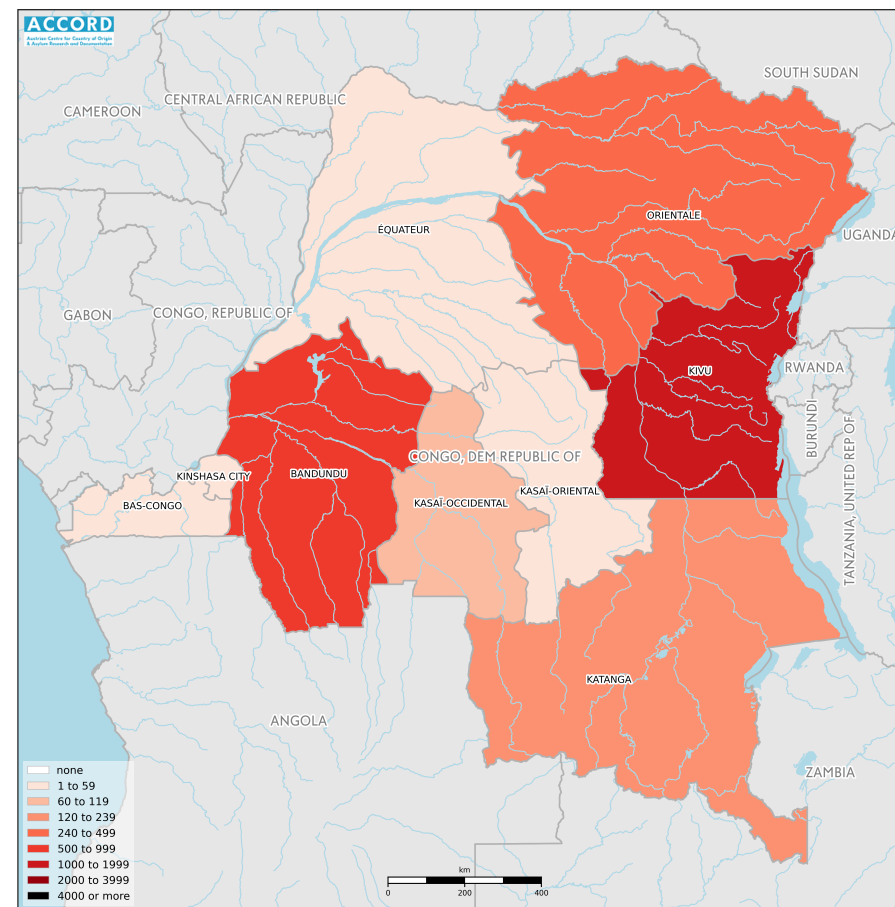
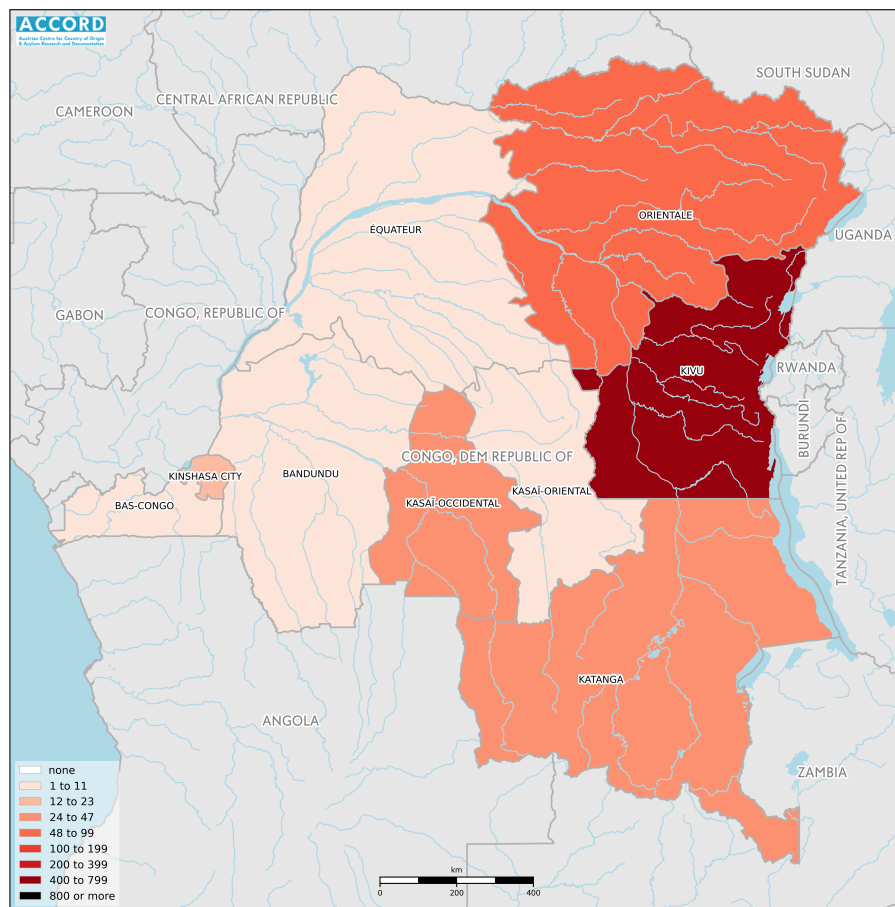
# DEMOCRATIC REPUBLIC OF CONGO, YEAR 2018:

Update on incidents according to the Armed Conflict Location & Event Data Project (ACLED)

compiled by ACCORD, 25 February 2020

## Number of reported incidents with at least one fatality

## Number of reported fatalities



National borders: [GADM, November 2015b](#); administrative divisions: [GADM, November 2015a](#); incident data: [ACLED, 22 February 2020](#); coastlines and inland waters: [Smith and Wessel, 1 May 2015](#)

## Contents

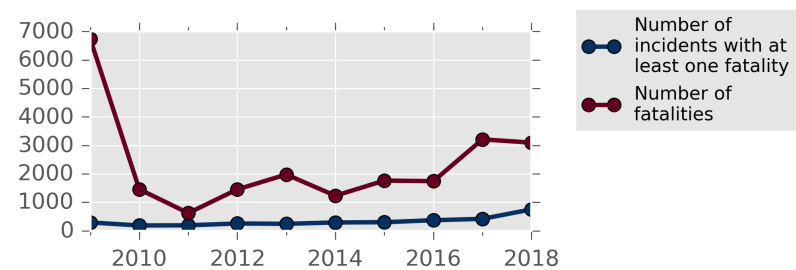
Number of reported fatalities	1
Number of reported incidents with at least one fatality	1
Conflict incidents by category	2
Development of conflict incidents from 2009 to 2018	2
Methodology	3
Conflict incidents per province	4
Localization of conflict incidents	4
Disclaimer	6

## Conflict incidents by category

Category	Number of incidents	Number of incidents with at least one fatality	Number of fatalities
Battles	628	361	1744
Violence against civilians	622	351	1286
Strategic developments	170	0	0
Protests	122	10	17
Riots	105	25	39
Explosions / Remote violence	8	3	9
<b>Total</b>	<b>1655</b>	<b>750</b>	<b>3095</b>

This table is based on data from ACLED (datasets used: [ACLED, 22 February 2020](#)).

## Development of conflict incidents from 2009 to 2018



This graph is based on data from ACLED (datasets used: [ACLED, 22 February 2020](#)).

## Methodology

The data used in this report was collected by the Armed Conflict Location & Event Data Project (ACLED). ACLED collects data on reported conflict events in selected African and Asian countries, Democratic Republic of Congo being among them. ACLED researchers collect event data from a variety of sources and code them by date, location, agent, and event type.

Most of the data collected by ACLED is gathered based on publicly available, secondary reports. It may therefore underestimate the volume of events. Fatality data particularly is vulnerable to bias and inaccurate reporting, and ACLED states to use the most conservative estimate available. ACLED uses the reports' context to estimate fatalities for events with reported fatalities for which the exact number is unknown ("10" for plural fatalities, "100" if "hundreds" are mentioned, etc.). For further details on ACLED and for the full data, see [www.acleddata.com](http://www.acleddata.com) and [Raleigh; Linke; Hegre, and Karlsen, 2010](#).

Based on this data, the Austrian Centre for Country of Origin & Asylum Research and Documentation (ACCORD) compiles updates on conflict incidents and publishes them on [ecoi.net](http://ecoi.net) to offer another access point to the ACLED datasets.

It is advised to employ extreme caution when using fatality numbers.

Assessments of the security situation should not be based solely on quantitative analysis of event data.

Note on the DR Congo: Administrative divisions (based on GADM data) are reflected as of before the 2015/2016 reform. The provinces displayed have been split into smaller provinces.

Geographic map data is primarily based on GADM, complemented with other sources if necessary. Incidents are mapped to GADM provinces using the provinces

in ACLED data. Province names and borders may differ between ACLED and GADM. Incidents that could not be located are ignored. The numbers included in this overview might therefore differ from the original ACLED data. ACLED uses varying degrees of geographic precision for the individual incidents, depending on what level of detail is reported. Thus, towns may represent the wider region in which an incident occurred, or the provincial capital may be used if only the province is known. Erroneous location data, especially due to identical place names, cannot be fully excluded.

Incidents comprise the following categories: battles, headquarters or bases established, non-violent strategic activities, riots/protests, violence against civilians, non-violent transfer of territory, remote violence. For details on these categories, please see

- ACLED – Armed Conflict Location & Event Data Project: Armed Conflict Location and Event Data Project (ACLED) Codebook (2019), 10 April 2019a [https://www.acleddata.com/wp-content/uploads/dlm\\_uploads/2017/10/ACLED\\_Codebook\\_2019FINAL\\_pbl.pdf](https://www.acleddata.com/wp-content/uploads/dlm_uploads/2017/10/ACLED_Codebook_2019FINAL_pbl.pdf)
- ACLED – Armed Conflict Location & Event Data Project: Armed Conflict Location and Event Data Project (ACLED) User Quick Guide, April 2019b [https://www.acleddata.com/wp-content/uploads/dlm\\_uploads/2019/04/General-User-Guide\\_FINAL.pdf](https://www.acleddata.com/wp-content/uploads/dlm_uploads/2019/04/General-User-Guide_FINAL.pdf)
- ACLED – Armed Conflict Location & Event Data Project: FAQs: ACLED Fatality Methodology, 27 January 2020 <https://www.acleddata.com/download/17979/>

## Conflict incidents per province

Province	Number of incidents	Number of incidents with fatalities	Number of fatalities
Bandundu	15	7	540
Bas-Congo	11	4	14
Kasaï-Occidental	63	27	113
Kasaï-Oriental	16	2	3
Katanga	92	32	154
Kinshasa City	66	19	48
Kivu	1086	562	1757
Orientale	288	89	451
Équateur	18	8	15

## Localization of conflict incidents

**Note:** The following list is an overview of the incident data included in the ACLED dataset. More details are available in the actual dataset (date, location data, event type, involved actors, information sources, etc.). The data's precision varies among the incidents: a town may represent a region, or the provincial capital may be used if the precise location of an incident is unknown. In the following list, the names of event locations are taken from ACLED, while the administrative region names are taken from GADM data which serves as the basis for the maps above.

In **Bandundu**, 15 incidents killing 540 people were reported. The following locations were among the affected: **Bongende, Bulungu, Gungu, Ibanda, Inongo, Kikwit, Mansele, Masi Manimba, Mongala, Nkolo 2, Yumbi**.

In **Bas-Congo**, 11 incidents killing 14 people were reported. The following locations were among the affected: **Boma, Kasangulu, Lukula, Matadi, Moanda, Mvuzi, Tambi**.

In **Kasaï-Occidental**, 63 incidents killing 113 people were reported. The following locations were among the affected: **Dekese, Demba, Dibaya, Kakenge, Kamako, Kamonia, Kananga, Kananga Airport, Katanga, Katende, Katenga, Kazumba, Luebo, Luiza, Mweka, Ndombi, Nganza, Shamandongo, Shokombenge, Tshikanda, Tshikapa, Tshikula**.

In **Kasaï-Oriental**, 16 incidents killing 3 people were reported. The following locations were among the affected: **Dikoka, Hianga, Katanda, Lodja, Lubao, Lubefu, Lusambo, Mbuji Mayi, Mulo**.

In **Katanga**, 92 incidents killing 154 people were reported. The following locations were among the affected: **Bendera, Kabare, Kakanda, Kalembe, Kalemie, Kalima, Kalolo, Kamayi, Kambamba, Kambinga, Kamina, Kaputuka, Kashege, Kasumbalesa, Kawama, Kayumba, Kilembwe, Kisiki, Kolwezi, Kongolo, Lambo Katenga, Lubumbashi, Makutano, Malali, Malemba Nkulu, Manga, Mazonde, Muleba, Numbi, Nyunzu, Pweto, Ruashi, Tanganyika, Tshibambe**.

In **Kinshasa City**, 66 incidents killing 48 people were reported. The following locations were among the affected: **Bandalungwa, Gombe, Kalamu, Kinshasa, Kisenso, Limete, Nsele**.

In **Kivu**, 1086 incidents killing 1757 people were reported. The following locations were among the affected: **Abia, Baraka, Barara, Baswagha, Beni, Bijombo, Bimpanga, Bingi, Bingo, Biriku, Bisangani, Bishusha, Bitakongo, Bogabo, Boikene, Bubare, Buganza, Buhumba, Bukavu, Bulambo-Isale, Bulenga, Bulengera, Bulongo, Bunyakiri, Bunyampuli, Bunyereza, Burungu, Busanza, Busawa, Bushumba, Busumba, Busurungi, Butale, Butembo, Butole**.

Butumba, Buziba, Bwalanda, Bwegera, Bwenderu, Bwesho, Chamishasha, Eringiti, Faringa, Fizi, Goma, Idjwi, Idjwi Island, Ishasha, Izege, Kabambare, Kabare, Kabase, Kabasewa, Kabasha, Kabere, Kabeya, Kabikokole, Kabindula, Kabunambo, Kabushwa, Kadou, Kafunzo, Kagogo, Kahira, Kahololo, Kahunga, Kahuzi-Biega National Park, Kako, Kakombe, Kakuka I, Kakuku I, Kalehe, Kalembe, Kalengera, Kalima, Kalingi, Kaliro Mangina, Kalole-Mapeto, Kalungu, Kamango, Kamanyola, Kambale, Kamituga, Kamohorera, Kaniro, Kanvinvira, Kanyabayonga, Kanyaminsindo, Kanyatsi, Kanyihunga Mambira, Karambi, Karuruma, Kasenga, Kasenya, Kasesa, Kashuga, Kasiki, Kasindi, Kasinga, Kasugho, Kasyiro, Katale, Katanga, Katendere, Katobo, Katoro, Katsiru, Katwiguru II, Katyaza, Kavumu, Kayna, Kazimia, Kibati, Kibingu, Kibirizi, Kibua, Kibumba, Kibutu, Kididiwe, Kigoma, Kihoma, Kikuku, Kilambo, Kilembwe, Kiliba, Kimoka, Kindu, Kinigi, Kinyandoni, Kiondo, Kipese, Kipriani, Kipupu, Kirima, Kirumba, Kisiki, Kisikivi, Kisima, Kisoro, Kisuma, Kitchanga, Kitemesho, Kiteraga, Kitobi, Kitobo, Kitshanga, Kitsimba, Kitumba, Kitunda, Kiwanja, Kokola I, Kungubamba, Kyondo, Lake Edward, Lemera, Linzo Sisene I, Loashi, Luberizi, Lubero, Lubondja, Lubwe, Lugendo, Lukopfu, Lukungu, Lukweti, Lulimba, Lulingu, Lusenda, Lutika, Luvungi, Lwibo, Mabambi, Mabapula, Maboya, Mabuku, Mabungu, Magembe, Mahungubwe, Majaga, Makobola, Makoka, Makumbo, Makungulano, Malela, Mambale, Mambanike, Mamunjoma, Mangango, Mangboko, Mangina, Mangobo, Mangolikene, Mangoyo, Manguredjpa, Maniema, Mapiki, Mapou, Masango, Mashango, Mashuba, Masisi, Matali, Matanda, Mavivi, Mayimoya, Mbau, Mboko, Mera, Migaba, Minembwe, Minova, Miriki, Misisi, Mitala, Mokoto, Mount Ndombi, Mugeru, Mugunga, Muhanga, Muhangi, Muhangu, Muhungu, Mukaka, Mukangi, Mukoko, Mulenge, Mulima, Mulindi, Munigi, Mununzi, Munyambelu, Murambi, Musasa, Mutabo, Mutambala, Mutanda, Mutarule, Mutongo, Mutupeke, Mutwanga, Mwalika, Mwenga, Mweso, Namoya, Narunanga, Ndosho, Nemba, Ngadi, Ngalula, Ngingwe, Ngite, Ngolombe, Ngugo, Nkwenda, Ntamugenga, Ntoto, Nyabiondo, Nyagezi, Nyakabere, Nyakibamba, Nyaleke, Nyambembe, Nyamilima, Nyangi Milimba, Nyanzale, Nyiragongo, Nyombe,

Nzovu, Oicha, Opira I, Pabuka, Paida, Pinga, Ramba, Rombe1, Rubare, Rubaya, Rugari, Rugenge, Rukoro, Rusayo, Rutemba, Rutshuru, Ruwenzori, Rwangoma, Rwenzori, Rwindi, Sake, Sange, Saramabila, Sayo, Sesele, Shabunda, Shanje, Sikwaila, Silimbamba, Tinge, Tongo, Totolito, Tshonka, Tubangoye, Tungudu, Ubwari Peninsula, Ugoma Mountains, Utunda, Uvira, Virunga National Park, Vitshumbi, Vuhombwe, Walikale, Waloa Loanda, Walungu, Wamaza, Ziralo.

In Orientale, 288 incidents killing 451 people were reported. The following locations were among the affected: Adjo, Ako, Ango, Angume, Aru, Aveba, Badiya, Badolo, Bamangana, Bambangana, Banalia, Banda, Bangadi, Bangalu, Basoko, Bavi, Bela, Bilisi, Blukwa, Boga, Bogoro, Bondo, Bule, Bunia, Burasi, Buta, Dakwa, Digba, Dikumba, Djailo, Djokwa, Djugu, Dongobe, Doruma, Dungu, Duru, Ebale, Esu, Faradje, Fataki, Gbatanabu, Gbitihi, Geti, Gina, Gobi, Gobu, Gongolo, Gurba, Gwane, Ibambi, Irumu, Isangi, Isiro, Iso, Ituri, Jiro, Kagili, Kamasuka, Kanyasi, Kasumaka, Kisangani, Komanda, Koni, Kpandroma, Kpanga, Kpegu, Kulugbangu, Landjo, Langbe, Lidjo, Lika, Lindimbila, Linga, Lita, Loga, Loko, Lokutu, Madi, Mahagi, Makpangi, Malili, Mambasa, Mambisa, Manbungulu, Mangbungulu, Manzagala, Masombido, Masombo, Mayawa, Mbiangu, Mogoroko, Mongbwalu, Mugalie, Muvaramu, Nambia, Namdike, Nango, Nduma, Ngilima, Nia-Nia, Niangara, Nizi, Nyakunde, Nyamamba, Pasi, Rodo, Samatari, Samboko, Sisa, Songamoya, Songolo, Soronga, Sukadi, Talolo, Tara, Tsede, Tshome, Tshopo, Ubundu, Wesu, Zambaleke, Zangabai, Zapai, Zigbi.

In Équateur, 18 incidents killing 15 people were reported. The following locations were among the affected: Budjala, Dongo, Gbadolite, Gemena, Kungu, Mbandaka, Mobambo, Yakoma.

## Sources

- ACLED – Armed Conflict Location & Event Data Project: Africa (Data through 22 February 2020), 22 February 2020  
<https://www.acleddata.com/download/2909/>
- GADM – Global Administrative Areas: COD\_adm.zip, Version 2.8, November 2015a  
[http://biogeo.ucdavis.edu/data/gadm2.8/shp/COD\\_adm.zip](http://biogeo.ucdavis.edu/data/gadm2.8/shp/COD_adm.zip)
- GADM – Global Administrative Areas: gadm28\_levels.shp, Version 2.8, November 2015b  
[http://biogeo.ucdavis.edu/data/gadm2.8/gadm28\\_levels.shp.zip](http://biogeo.ucdavis.edu/data/gadm2.8/gadm28_levels.shp.zip)
- Raleigh, Clionadh; Linke, Andrew; Hegre, Håvard, and Karlsen, Joakim: “Introducing ACLED-Armed Conflict Location and Event Data”, in: Journal of Peace Research (47(5) 2010), pp. 651–660  
<http://jpr.sagepub.com/content/47/5/651.full.pdf+html>
- Smith, Walter H. F. and Wessel, Paul: Global Self-consistent Hierarchical High-resolution Geography (GSHHG), Version 2.3.4, 1 May 2015  
<https://www.ngdc.noaa.gov/mgg/shorelines/data/gshhg/latest/>

## Disclaimer

Event data may be revised or complemented in future updates. Updates in ACLED’s datasets will not necessarily be reflected in ACCORD’s reports if the update occurs close to or after the latter’s publication. Changes in the sources used by ACLED to collect incident data might affect the comparability of data over time. For more information on ACLED’s methodology, please see [www.acleddata.com/resources/methodology/](http://www.acleddata.com/resources/methodology/). For more information on ACCORD’s products based on the data,

please see the [ecoi.net blog posts tagged with “ACLED”](#). The lack of information on an event in this report does not permit the inference that it did not take place. The boundaries and names displayed do not imply endorsement or acceptance by the Austrian Red Cross.

## Cite as

- ACCORD – Austrian Centre for Country of Origin & Asylum Research and Documentation: Democratic Republic of Congo, year 2018: Update on incidents according to the Armed Conflict Location & Event Data Project (ACLED), 26 February 2020