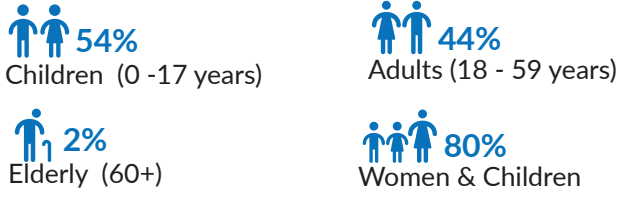


Refugees and Asylum seekers

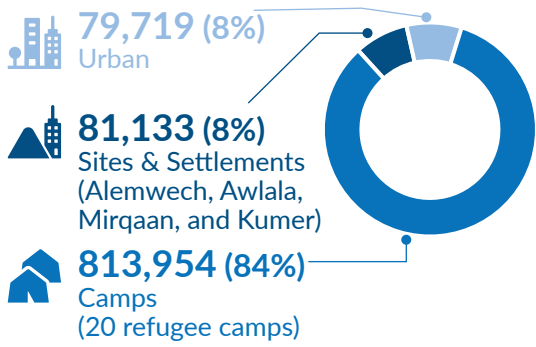
1,059,232

Total Refugees and Asylum seekers
974,806 refugees | 84,426 asylum seekers
Female: 52% | Male: 48%
Main country origin: South Sudan (40%),
Somalia (34%), and Eritrea (17%)

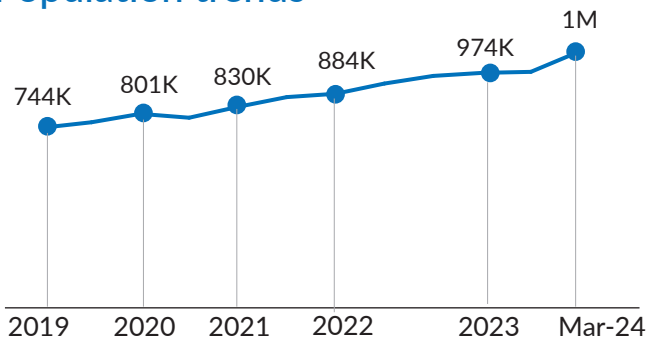
Age-gender breakdown



Population distribution



Population trends



IDPs and IDP Returnees

3,459,881

Internally Displaced Persons (IDPs)

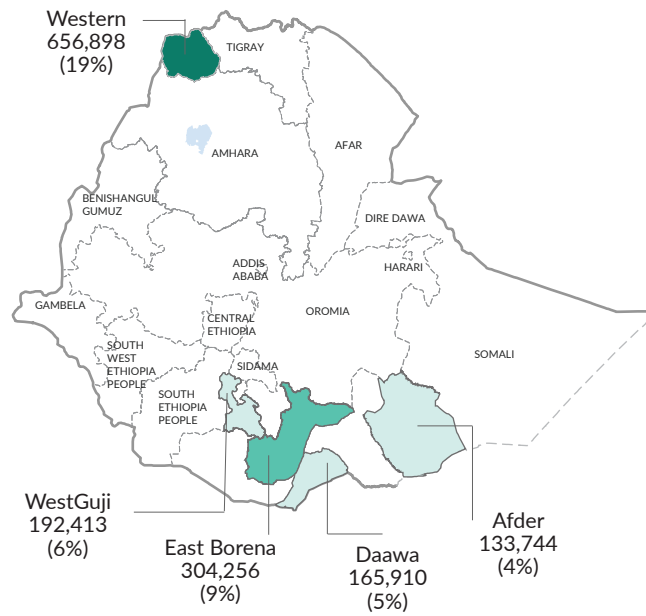
Sources: IOM DTM National Displacement Report 17

It is to be noted that Amhara region was largely uncovered due to increased insecurity, and the returnee caseload should likely be higher. Data collection in Amhara region was particularly affected due to insecurity, and only 13.3% of the planned locations were assessed. In previous rounds the caseload from Amhara region represented almost 10% of the total national displacement caseload identified.

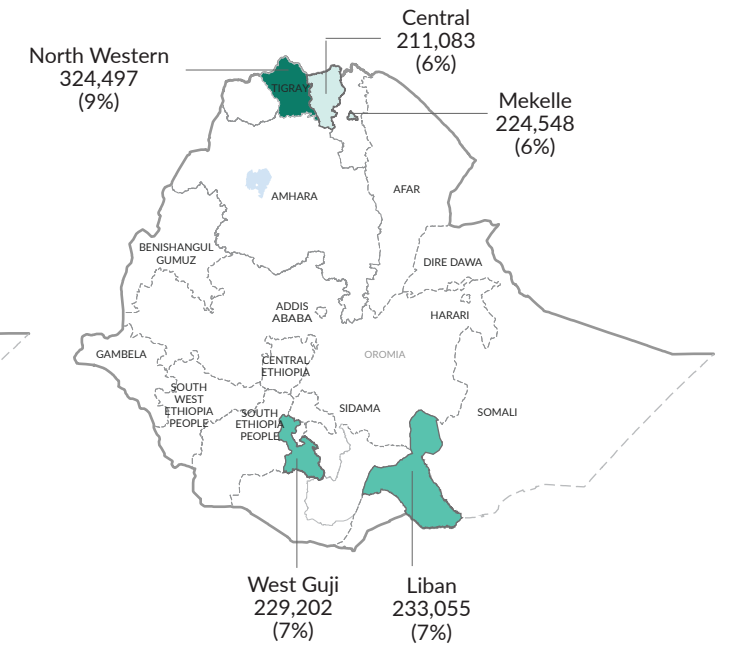
2,530,101

IDP Returnees

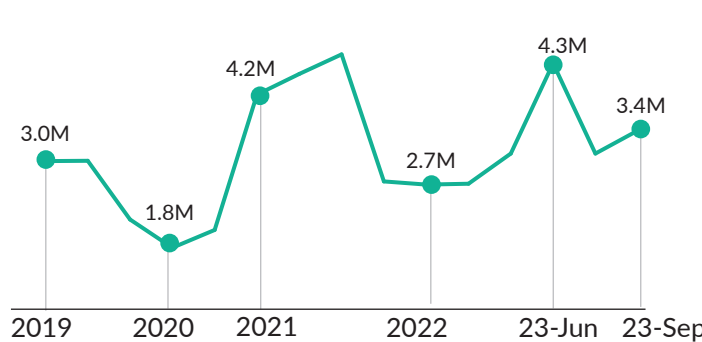
Top 5 zones of origin | IDPs



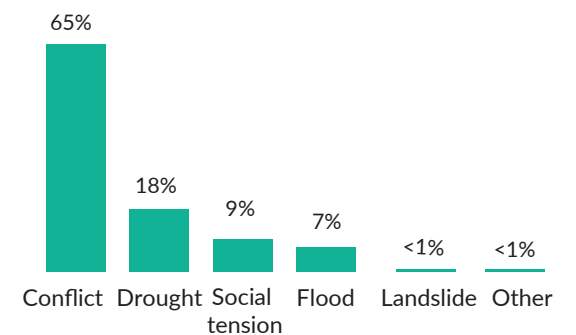
Top 5 zones of displacement | IDPs



Population trends | IDPs

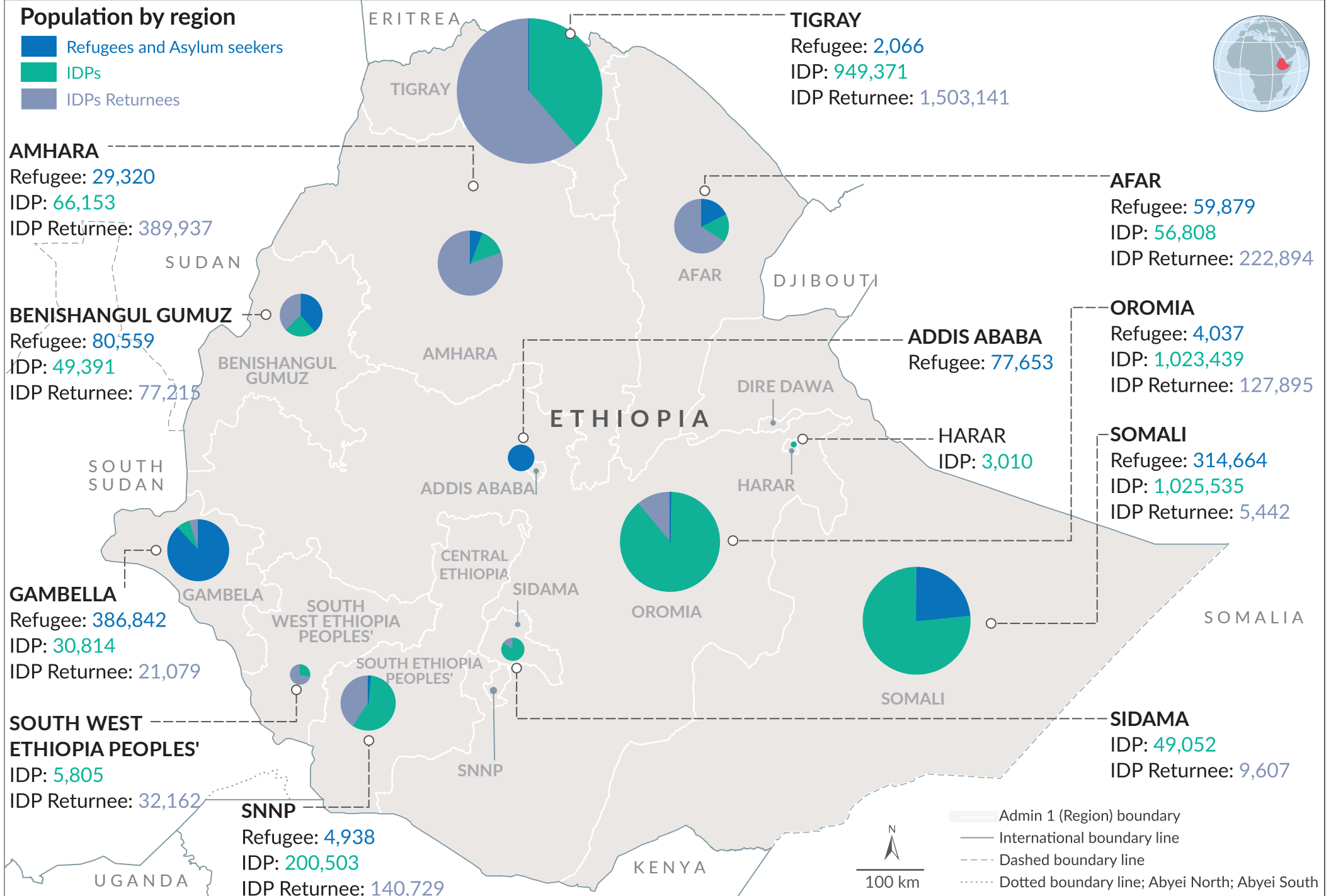


Reason of displacement | IDPs



Population by region

Refugees and Asylum seekers
IDPs
IDPs Returnees



The boundaries and names shown and the designations used on this map do not imply official endorsement or acceptance by the United Nations. * Final boundary between the Republic of Sudan and the Republic of South Sudan; and between Ethiopia and Somalia has not yet been determined.