

OVERVIEW: There are now 8.8 million forcibly displaced due to the outbreak of conflict in Sudan since April 2023, including 6.8 million internally and 1.8 million in neighbouring countries. Sudan and neighbouring countries were already hosting large refugee populations before this new emergency and require additional support to provide protection and critical life-saving assistance, including for those who have been secondarily displaced within Sudan. Urgent needs include water, food, shelter, health, and core relief items. The current priority activities are the registration of new arrivals, relocation away from border areas, identification of especially vulnerable families and persons with specific needs, and putting mechanisms in place to prevent and respond to gender-based violence and ensure alternative care services for unaccompanied refugee children.

8,853,025

Forcibly Displaced

6,786,816

New IDPs in Sudan

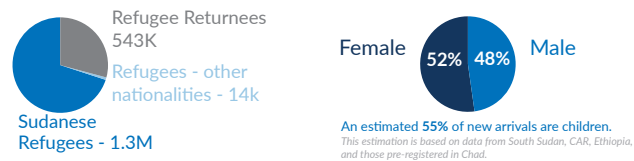
1,846,706

Newly arrived refugees, asylum seekers and returnees

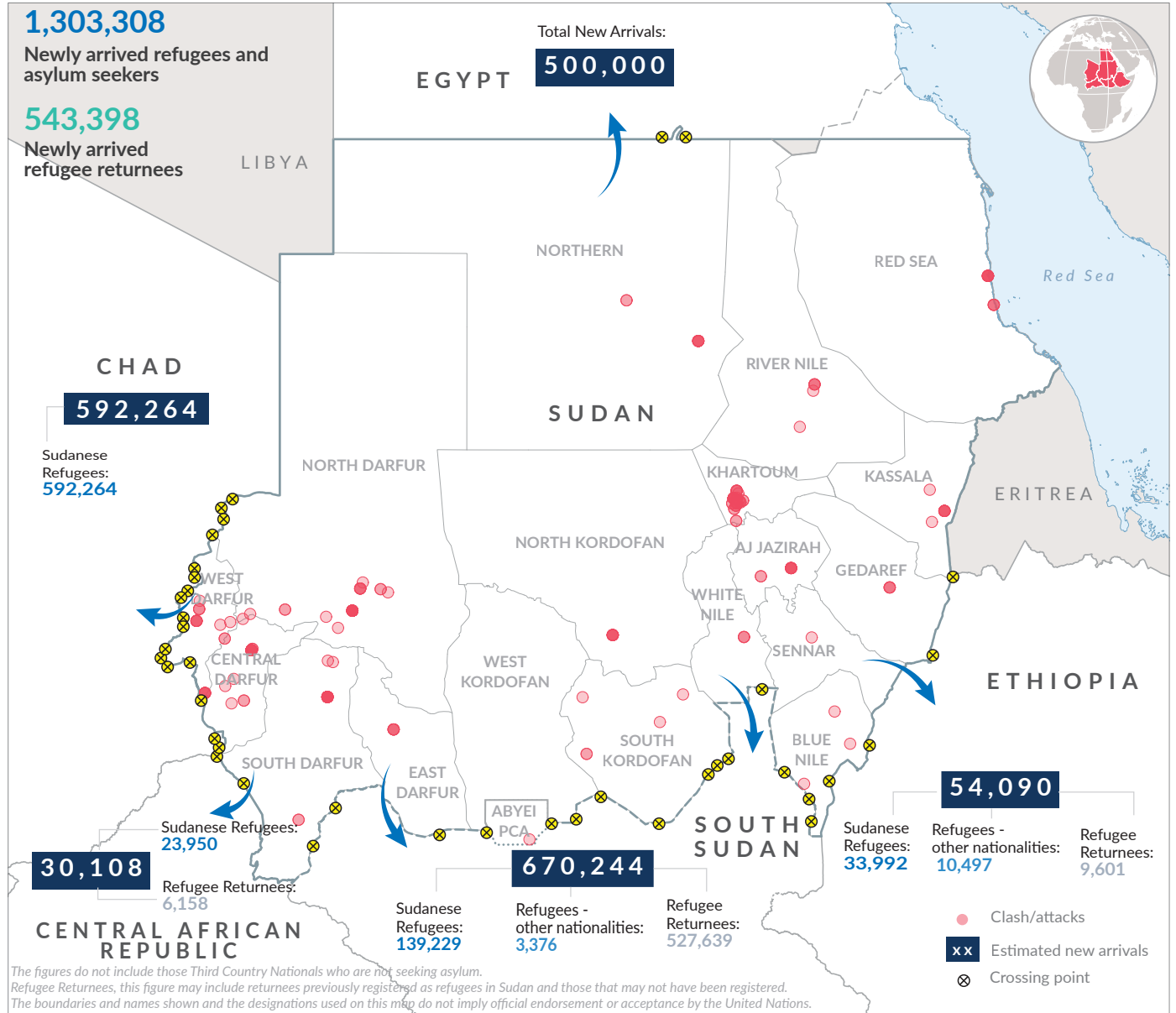
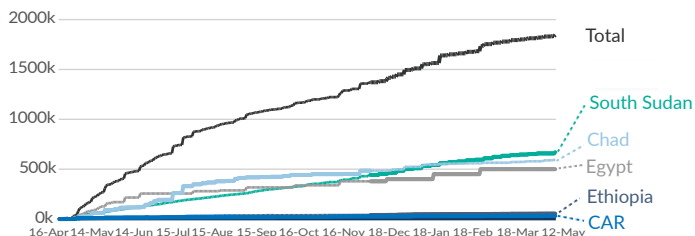
219,503

Self-relocated Refugees in Sudan

Arrivals by population and estimated gender type



New arrivals from Sudan



The figures do not include those Third Country Nationals who are not seeking asylum. Refugee Returnees, this figure may include returnees previously registered as refugees in Sudan and those that may not have been registered. The boundaries and names shown and the designations used on this map do not imply official endorsement or acceptance by the United Nations.