

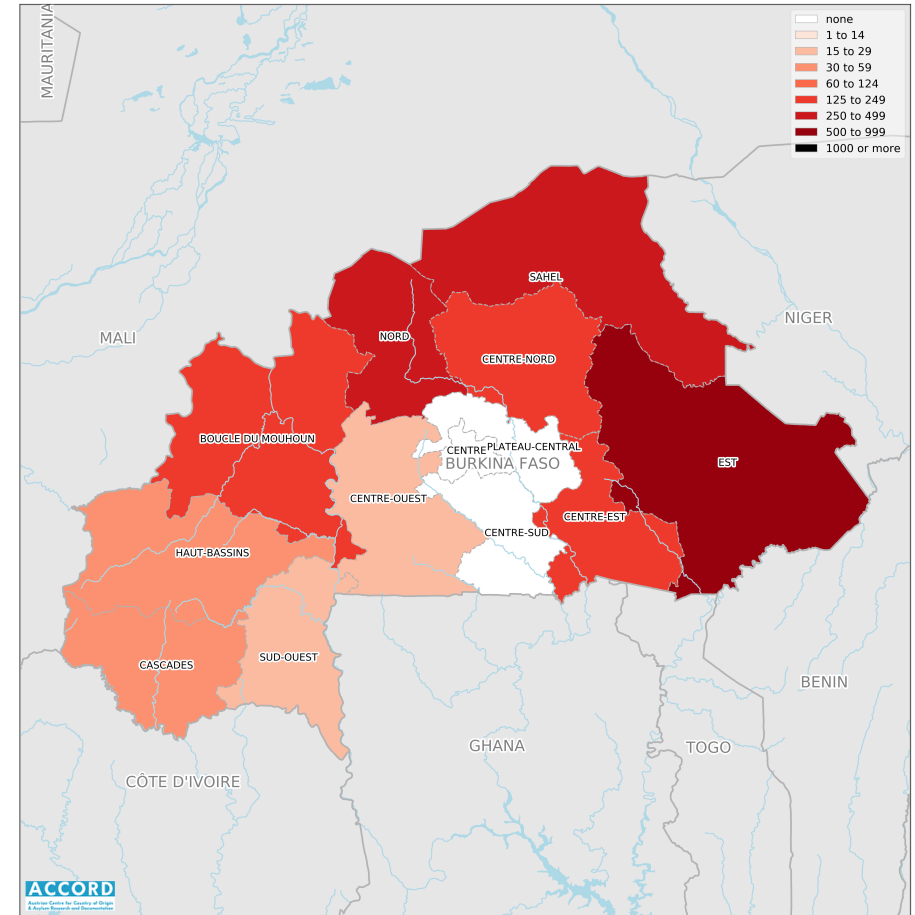
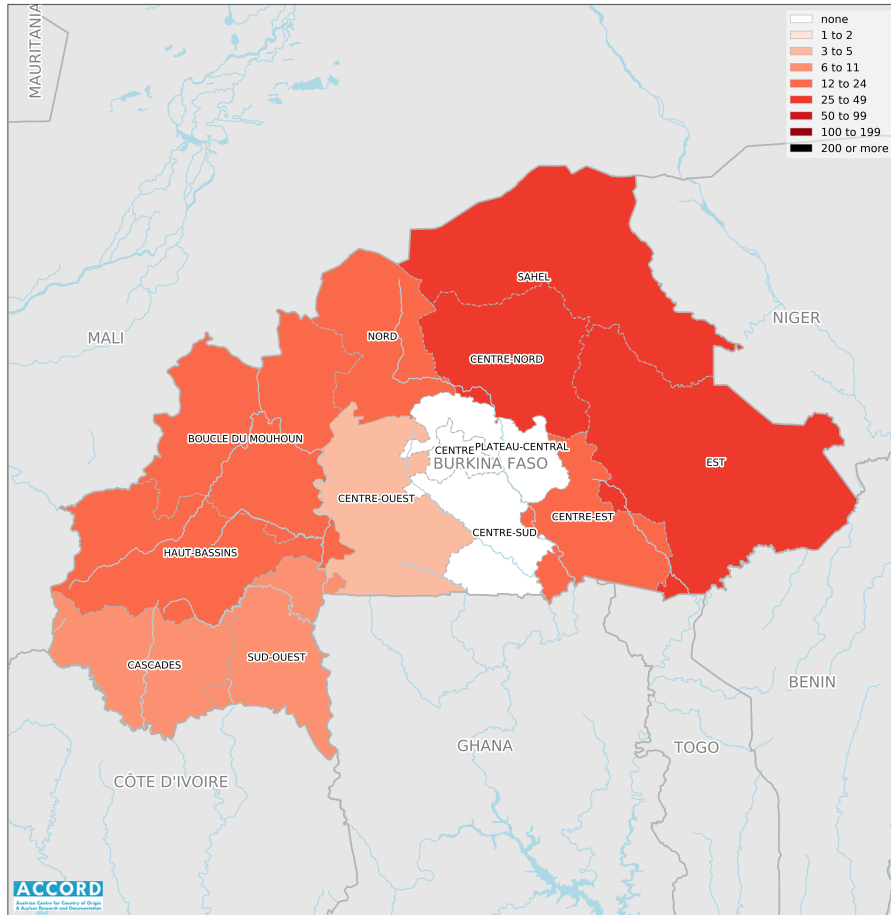
# BURKINA FASO, FIRST QUARTER 2024:

Update on incidents according to the Armed Conflict Location & Event Data Project (ACLED)

compiled by ACCORD, 8 May 2024

## Number of reported incidents with at least one fatality

## Number of reported fatalities



National borders: [GADM, 6 May 2018b](#); administrative divisions: [GADM, 6 May 2018a](#); incident data: [ACLED, 3 May 2024](#); coastlines and inland waters: [Smith and Wessel, 1 May 2015](#)

## Contents

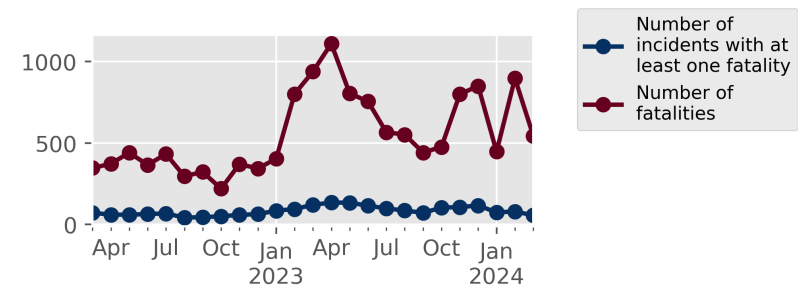
Number of reported fatalities	1
Number of reported incidents with at least one fatality	1
Conflict incidents by category	2
Development of conflict incidents from March 2022 to March 2024	2
Methodology	3
Conflict incidents per province	4
Localization of conflict incidents	4
Disclaimer	6

## Conflict incidents by category

Category	Number of incidents	Number of incidents with at least one fatality	Number of fatalities
Battles	127	86	814
Explosions / Remote violence	92	61	210
Violence against civilians	92	64	863
Strategic developments	59	1	1
Protests	38	0	0
Riots	2	0	0
<b>Total</b>	<b>410</b>	<b>212</b>	<b>1888</b>

This table is based on data from ACLED (datasets used: [ACLED](#), 3 May 2024).

## Development of conflict incidents from March 2022 to March 2024



This graph is based on data from ACLED (datasets used: [ACLED](#), 3 May 2024).

## Methodology

The data used in this report was collected by the Armed Conflict Location & Event Data Project (ACLED). Based on a variety of sources, ACLED collects data on reported conflict events around the world and provides publicly available event-based datasets. ACLED data contains information on the event type, the date, location, involved actors, and other characteristics of the incident. Most of the data collected by ACLED is gathered based on publicly available reports. As information on fatalities is subject to bias and can vary between sources for the same event, ACLED employs “the most conservative and reliable fatality estimate available”. ACLED uses the reports’ context to estimate fatalities for events with reported fatalities for which the exact number is unknown (“3” or “10” for plural fatalities, depending on the context; “100” if “hundreds” are mentioned, etc.). For further details on ACLED and for the full data, see [www.acleddata.com](http://www.acleddata.com) and [ACLED, 2023](#).

Based on this data, the Austrian Centre for Country of Origin & Asylum Research and Documentation (ACCORD) compiles updates on conflict incidents and publishes them on [ecoi.net](http://ecoi.net) to offer another access point to the ACLED datasets.

It is advised to employ extreme caution when using fatality numbers.

Assessments of the security situation should not be based solely on quantitative analysis of event data.

Geographic map data is primarily based on GADM, complemented with other sources if necessary. Incidents are mapped to GADM provinces using the provinces in ACLED data. Province names and borders may differ between ACLED and GADM. Incidents that could not be located are ignored. The numbers included in this overview might therefore differ from the original ACLED data. ACLED uses varying degrees of geographic precision for the individual incidents, depending on what level of detail is reported. Thus, towns may represent the wider region in which

an incident occurred, or the provincial capital may be used if only the province is known. Erroneous location data, especially due to identical place names, cannot be fully excluded.

Incidents comprise the following categories: battles, violence against civilians, remote violence, riots/protests, non-violent strategic activities. For details on these categories, please see

- ACLED – Armed Conflict Location & Event Data Project: Armed Conflict Location and Event Data Project Codebook, 2023a  
[https://acleddata.com/acledatanew/wp-content/uploads/dlm\\_uploads/2023/06/ACLED\\_Codebook\\_2023.pdf](https://acleddata.com/acledatanew/wp-content/uploads/dlm_uploads/2023/06/ACLED_Codebook_2023.pdf)
- ACLED – Armed Conflict Location & Event Data Project: FAQs: ACLED Fatality Methodology, January 2023b  
[https://acleddata.com/acledatanew/wp-content/uploads/2023/01/FAQs-ACLED-Fatality-Methodology\\_2023.pdf](https://acleddata.com/acledatanew/wp-content/uploads/2023/01/FAQs-ACLED-Fatality-Methodology_2023.pdf)
- ACLED – Armed Conflict Location & Event Data Project: Quick Guide to ACLED Data, March 2023c  
<https://acleddata.com/resources/quick-guide-to-acled-data/>

## Conflict incidents per province

Province	Number of incidents	Number of incidents with fatalities	Number of fatalities
Boucle du Mouhoun	55	20	159
Cascades	13	7	48
Centre	4	0	0
Centre-Est	35	18	133
Centre-Nord	63	32	228
Centre-Ouest	6	4	20
Centre-Sud	3	0	0
Est	84	45	662
Haut-Bassins	25	15	47
Nord	38	17	304
Plateau-Central	1	0	0
Sahel	72	48	258
Sud-Ouest	11	6	29

## Localization of conflict incidents

**Note:** The following list is an overview of the incident data included in the ACLED dataset. More details are available in the actual dataset (date, location data, event type, involved actors, information sources, etc.). The data's precision varies among the incidents: a town may represent a region, or the provincial capital may be used if the precise location of an incident is unknown. In the following list, the names of event locations are taken from ACLED, while the administrative region names are taken from GADM data which serves as the basis for the maps above.

In **Boucle du Mouhoun**, 55 incidents killing 159 people were reported. The following locations were among the affected: Babekolon, Badie, Bagala, Barakui, Barani, Biron Bobo, Bokuy, Boromo, Daka, Dedougou, Denissa, Diekui, Djibasso, Doumbala, Douroula, Gossina, Kiembara, Komonkuy, Kosso, Lankoue, Niankuy, Nouna, Pa, Pahin, Passakongo, Sambadougou, Sanaba, Sanakui, Sankoue, Solenzo, Tenou, To, Tougan, Wang, Zekui.

In **Cascades**, 13 incidents killing 48 people were reported. The following locations were among the affected: Banfora, Doutie, Folonzo, Madiasso, Ouangolodougou, Poikoro, Touroukoro.

In **Centre**, 4 incidents killing 0 people were reported. The following locations were among the affected: Ouagadougou, Tanghin-Dassouri.

In **Centre-Est**, 35 incidents killing 133 people were reported. The following locations were among the affected: Bane, Bittou, Djambende, Gngangdin, Kaongo, Kiougou-Kandaga, Kogo, Komin-Yanga, Koogo, Lalgaye, Moaga, Mogomnore, Napade, Nohao, Salembaore, Sangha, Sisse, Sologo 1, Soudougou, Tangpore, Tenkodogo, Tessoaguen, Tiba, Yaktibo, Yonde, Zongo.

In **Centre-Nord**, 63 incidents killing 228 people were reported. The following locations were among the affected: Baskondo, Basnere, Belga, Biliga, Boala, Boulsa, Bourzanga, Gabou, Goassa, Gondekoube, Gorbale, Goren, Guibga, Kalamba, Kalambaogo, Kangare, Kaya, Kongoussi, Kourpelle, Moredaga, Nakombogo, Napalgue, Nare, Nassere, Nawoubkiba, Oualga, Paspanga, Pensa, Pissila, Ronghin, Silmangue, Sirgui, Taparko, Tikare, Tougouri, Touroum, Toyende, Wanbsouya, Yalgo, Yalka, Yaongo, Zambanga.

In **Centre-Ouest**, 6 incidents killing 20 people were reported. The following locations were among the affected: Koudougou, Leo, Lerou, Silly, Tiogo.

In **Centre-Sud**, 3 incidents killing 0 people were reported. The following locations were among the affected: **Kombissiri, Rakaye-Mossi, Tiebele.**

In **Est**, 84 incidents killing 662 people were reported. The following locations were among the affected: **Banikidi, Benfoaka, Bibgou, Bilanga, Bogande, Boudieri, Boungou, Diapaga, Fada NGourma, Foutouri, Gayeri, Kabonga, Kalbouli, Kaldiouani, Kalmama, Kankandi, Kantchari, Kiani, Kodjena, Komandougou, Kompienga, Kongaye, Kouloungou, Kpadiari, Logobou, Manni, Maridjanga, Nadiagou, Nagare, Namounou, Natiaboani, Paladoube, Pama, Partiaga, Piela, Potiamanga, Sakoani, Samtangou, Sorga, Soualimou, Tambiga, Tankoualou, Tanwalbougou, Tawori, Tialboanga, Tiasseri, Tindangou, Tounga, Yamba.**

In **Haut-Bassins**, 25 incidents killing 47 people were reported. The following locations were among the affected: **Balla, Bekui, Bereba, Dimikui, Fo, Founzan, Hounde, Koumbia, Man, Maro, Nematoulaye, Niamana, Popioho, Satiri, Sienako, Signoghin, Soa, Zanfara.**

In **Nord**, 38 incidents killing 304 people were reported. The following locations were among the affected: **Aorema, Basnere, Goubre, Gourcy, Komsilga, Kossouka, Koumbri, Namissiguima, Nango, Noden, Ouahigouya, Ouattigue, Robena, Sanspelga-Mossi, Seguenega, Sene-Todiam, Sim, Sittigo, Solle, Tangaye, Thiou, Tibou, Titao, Touri, Yako, Youba.**

In **Plateau-Central**, 1 incident killing 0 people was reported. The following location was among the affected: **Bousse.**

In **Sahel**, 72 incidents killing 258 people were reported. The following locations were among the affected: **Amissia, Arbinda, Bambofa, Boulougou, Boundounyouddji, Dalla, Dambam, Datambi, Djao Djao, Djibo, Dori, Ekeou, Essakane-Site, Falagountou, Gangaol, Gorgadji, Gorom-Gorom, Haini, Hakoundel, Intagom, Kampiti, Kate, Kelbo, Korizena, Nassoumbou, Obouga,**

**Oueldi, Sebba, Seytenga, Souma, Taouremba, Tema, Tin Abao, Tin-Akoff, Touka-Bayel, Tyekanyebi, Wiboria.**

In **Sud-Ouest**, 11 incidents killing 29 people were reported. The following locations were among the affected: **Bagouera, Djigoue, Helintira, Irino, Lokosso-Gan, Mougue.**

## Sources

- ACLED – Armed Conflict Location & Event Data Project: Armed Conflict Location and Event Data Project Codebook, 2023  
[https://acleddata.com/acleddatanew/wp-content/uploads/dlm\\_uploads/2023/06/ACLED\\_Codebook\\_2023.pdf](https://acleddata.com/acleddatanew/wp-content/uploads/dlm_uploads/2023/06/ACLED_Codebook_2023.pdf)
- ACLED – Armed Conflict Location & Event Data Project: Africa, 3 May 2024  
[https://acleddata.com/curated-data-files/#Africa\\_1997-2024\\_May03](https://acleddata.com/curated-data-files/#Africa_1997-2024_May03)  
(visited on 8 May 2024)
- GADM – Global Administrative Areas: gadm36\_BFA\_shp.zip, Version 3.6, 6 May 2018a  
[http://biogeo.ucdavis.edu/data/gadm3.6/shp/gadm36\\_BFA\\_shp.zip](http://biogeo.ucdavis.edu/data/gadm3.6/shp/gadm36_BFA_shp.zip)
- GADM – Global Administrative Areas: gadm36\_levels.shp, Version 3.6, 6 May 2018b  
[http://biogeo.ucdavis.edu/data/gadm3.6/gadm36\\_levels.shp.zip](http://biogeo.ucdavis.edu/data/gadm3.6/gadm36_levels.shp.zip)
- Smith, Walter H. F. and Wessel, Paul: Global Self-consistent Hierarchical High-resolution Geography (GSHHG), Version 2.3.4, 1 May 2015  
<https://www.ngdc.noaa.gov/mgg/shorelines/data/gshhg/latest/>

## Disclaimer

ACLED data undergoes several rounds of review before publication and is continually updated as new events are added and existing events are revised as new information becomes available. Updates in ACLED's datasets will not necessarily be reflected in ACCORD's reports if the update occurs close to or after the latter's publication. Changes in the sources used by ACLED to collect incident data might affect the comparability of data over time. For more information on

ACCORD's products based on the data, please see the [ecoi.net blog posts tagged with "ACLED"](#). The lack of information on an event in this report does not permit the inference that it did not take place. The boundaries and names displayed do not imply endorsement or acceptance by the Austrian Red Cross.

## Cite as

- ACCORD – Austrian Centre for Country of Origin & Asylum Research and Documentation: Burkina Faso, first quarter 2024: Update on incidents according to the Armed Conflict Location & Event Data Project (ACLED), 8 May 2024